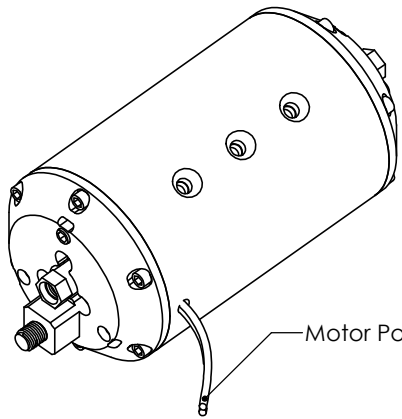
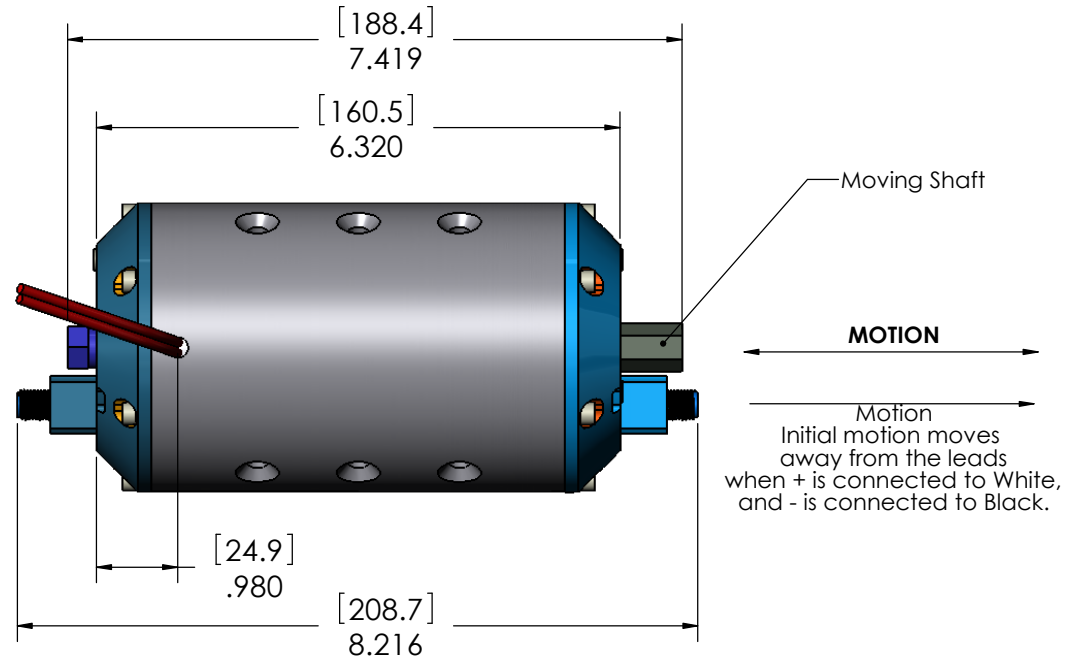
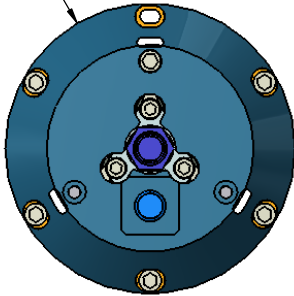


These drawings and specifications are the property of H2W Technologies, Inc. They are issued in confidence and shall not be reproduced, copied, or used without written permission from H2W Technologies, Inc.

[88.9]
Ø3.500



Motor Power Leads (2)

Notes:

1. The motor is intended to oscillate, and operates with internal flexures.
2. This motor is a special custom design, and not normally kept in stock.

H2W Technologies, Inc.
26470 Ruether Ave #102, Santa Clarita, CA 91350 USA
Tel: (661) 251-2081 Fax: (661) 251-2067
www.h2wtech.com

TITLE Moving Magnet Non-Comm DC Linear Actuator
Model# NCM03-35-500-4F

UNLESS SPECIFIED OTHERWISE: All dimensions are in inches Standard Tolerances are as follows: XXX ±.005 ANGLES ±1° XX ±.010 FILLETS AND X ±.020 CORNERS 0.00 Remove All Burrs and Sharp Edges				MATERIAL				DWG # 30-0877	
FINISH				DRAWN		DATE		REV	
				GOG		4-15-08		---	
				APPROVED		DATE		SHEET	
				MFW		4-15-08		1 of 2	

MOVING MAGNET NON-COMM ACTUATOR SPECIFICATIONS		
Motor P/N	NCM03-35-500-4F	
Stroke	0.25"	6.4 mm
Radial Clearance	N/A in	N/A mm
Bearing Type	Custom Flexure Design	
Moving Mass	5.50 lbs	2500 grams
Total Mass	12.0 lbs	5450 grams
Resistance @ 20C	5.6 ohms	
Inductance @ 20C	2.45 mH	
Electrical Time Constant	0.44 msec	
Motor Constant	7.05 LBS/SQRT(Watt)	31.4 N/SQRT(Watt)
Force Constant	16.6 LBS/Amp	74.0 N/Amp
Back EMF	1.88 V/ips	74.0 V/m/sec
Continuous Force	50 LBS	223 N
Max Power @ 100% Duty	50 Watts	
Peak Force	150 LBS	668 N
Max Power @ 10% Duty	455 Watts	